



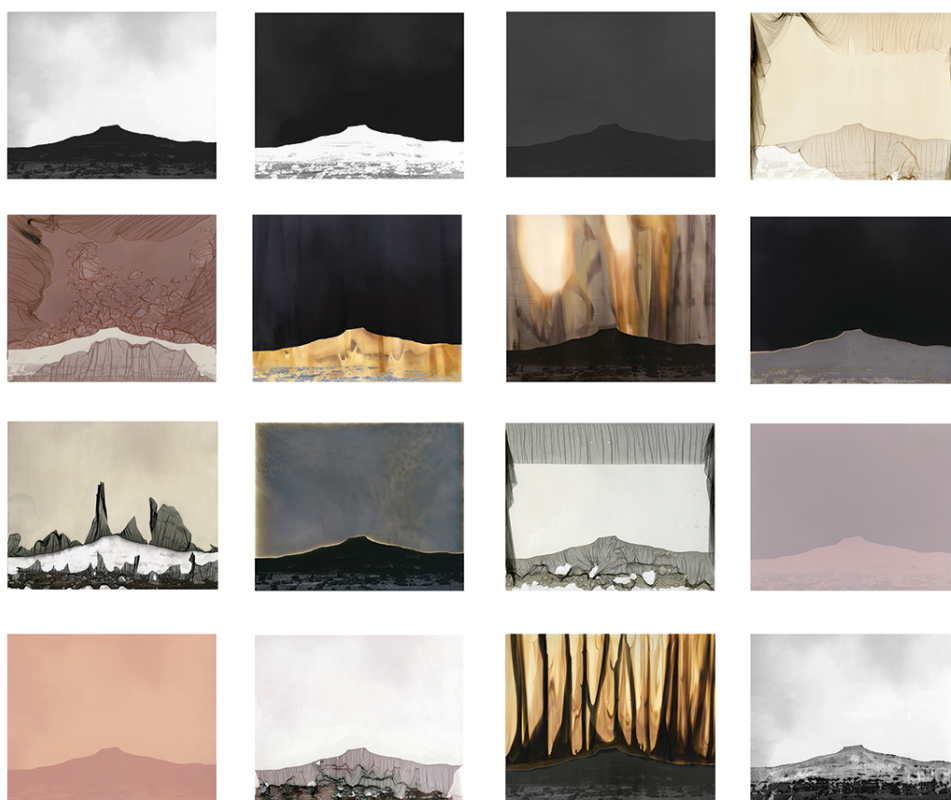
Presents:

CAITLYN SOLDAN

Desertscapes: Altered Views of New Mexico

Opening Reception: Friday, March 6, 2020, 5-7pm

Exhibition is on view through April 25, 2020

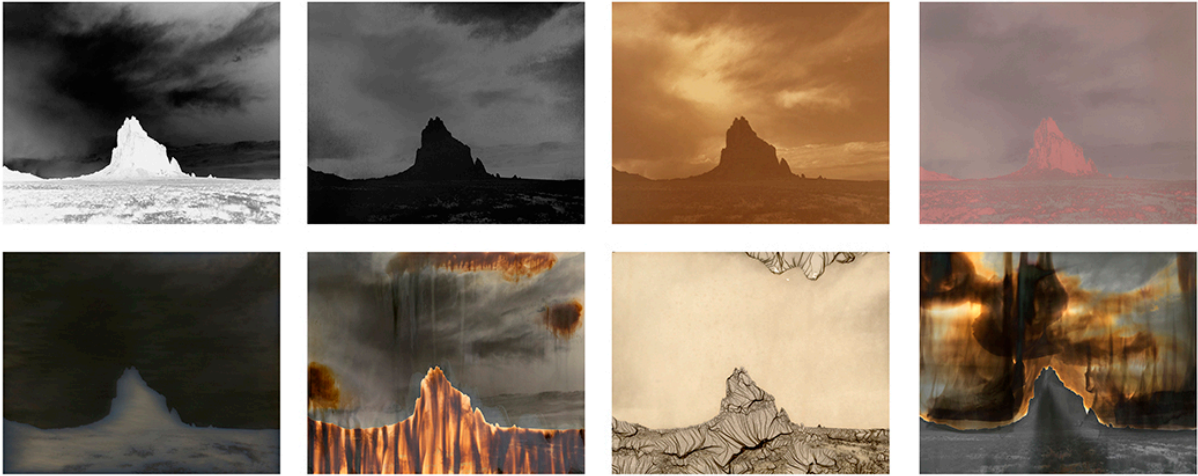


CAITLYN SOLDAN, *Cerro Pedernal Studies*, 2019, Installation of 16 prints, each 8x10", unique.

Desertscapes : Altered Views of New Mexico is a solo exhibition with Santa Fe photo-based artist Caitlyn Soldan which explores various approaches to iconic views in New Mexico landscapes. Included in the exhibit are variations of Pedernal Mesa, Shiprock, and the Taos Gorge. Just as Pedernal Mesa was a great inspiration to Georgia O'Keeffe's paintings and served as a major muse for her at Ghost Ranch where she had her studio, Caitlyn too is moved by the unique New Mexico desert land. Soldan creates landscape studies in various photographic processes that yield unique one-of-a-kind prints which each represent the different emotional qualities in nature. By virtue of repetition with the subject matter, the artist seeks to honor the subject which inspires and motivates her.

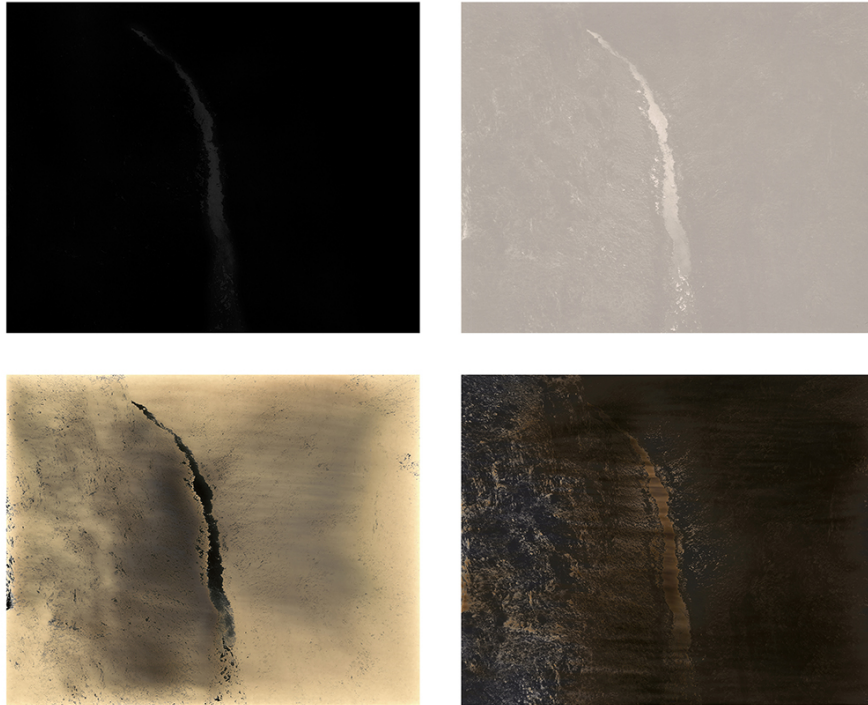
1405 Paseo de Peralta, Santa Fe, New Mexico 87501 505-577-6708 info@obscuragallery.net

WWW.OBSCURAGALLERY.NET



CATLYN SOLDAN, *Shiprock Studies*, 2019, Installation of 8 prints, each 8x10", unique.

Caitlyn says of the work: *"This project involves taking iconic scenes in the landscape and deconstructing them using experimental darkroom techniques. I have been photographing geological formations and mountain ranges near my home in New Mexico and using alternative gelatin silver processes such as mordantage, chromoskedasic sabattier, lumen printing, chemigram/chemical painting and solarization on these images. I am interested in exploring what happens to memories when a familiar scene is altered."*



CATLYN SOLDAN, *Rio Grande Gorge Studies*, 2019, Installation of 4 prints, each 8x10", unique.



CAITLYN SOLDAN, *Rio Grande Gorge Studies*, 2019, Installation of 2 prints, each 8x10", unique.

Caitlyn Soldan is a fine art photographer from Chicago, Illinois based in Santa Fe, New Mexico. She received a BFA in photography from Savannah College of Art and Design where she focused her studies on alternative processes and the history of photography. Her work explores themes of history, memory and place. Caitlyn specializes in historic photographic processes, although she also loves finding ways of blending old processes with new technology. In addition to creating her artwork, Caitlyn works as a digital archivist for the New Mexico History Museum/Palace of the Governors.

For all the artists' images in the exhibition please visit the website link:

www.obscuragallery.net/artwork/artists/caitlyn-soldan/desertscapes/

For more information please contact:

Jennifer Schlesinger

info@obscuragallery.net

505-577-6708

THE GALLERY LOCATION AND HOURS

Obscura Gallery is located in the Santa Fe downtown historic district two blocks east of the revitalized Downtown Railyard district. Gallery hours are Tuesday – Saturday, 11-5pm and by appointment.

Parking is limited. Additional parking is available Monday – Friday from 8:00am – 9:00pm at the State Capitol Parking Facility municipal garage located at 485 Galisteo Street. There is also metered parking always available on Galisteo street next to the Parking Facility.